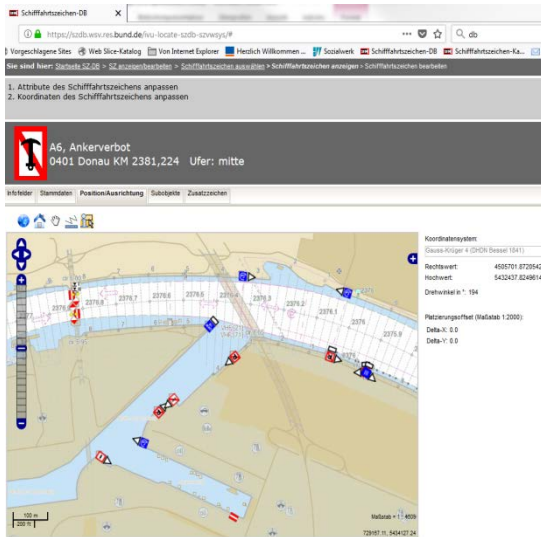
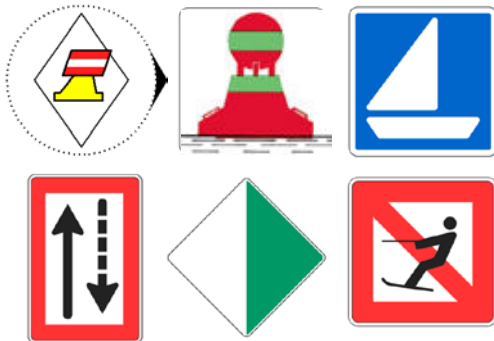


Incremental IENC Updates



	Code	CEVNI code	on pos-o	miss-m	off pos-f	virt-v	Name
	0						Default, Type not specified
fixed aids, landmarks	1	4.A + 4.B					Channel near the right bank
	2	5.A + 5.B					Channel near the left bank
	3	4.C + 4.D					Cross-over right bank
	4	5.C + 5D					Cross-over left bank
	5	8.C - 8.C2					Bridge pillar
	6	8.C3 + 8.C4					Overhead cable
floating aids	7	1.A - 1.D					Buoy right-hand side
	8	2.A - 2.D					Buoy left-hand side
	9	3.A - 3.D					Bifurcation
	10	3.E1 + 3.F1					Bifurcation, pass right-hand side
	11	3.E + 3.F					Bifurcation, pass left-hand side
	12	1.F + 1.F1					Danger point or obstacle right-hand side

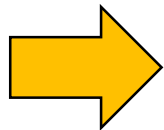


Incremental IENC Updates in Germany

- Motivation
- IENC production and distribution
- Concept for Incremental IENC Updates

Motivation for Incremental IENC Updates

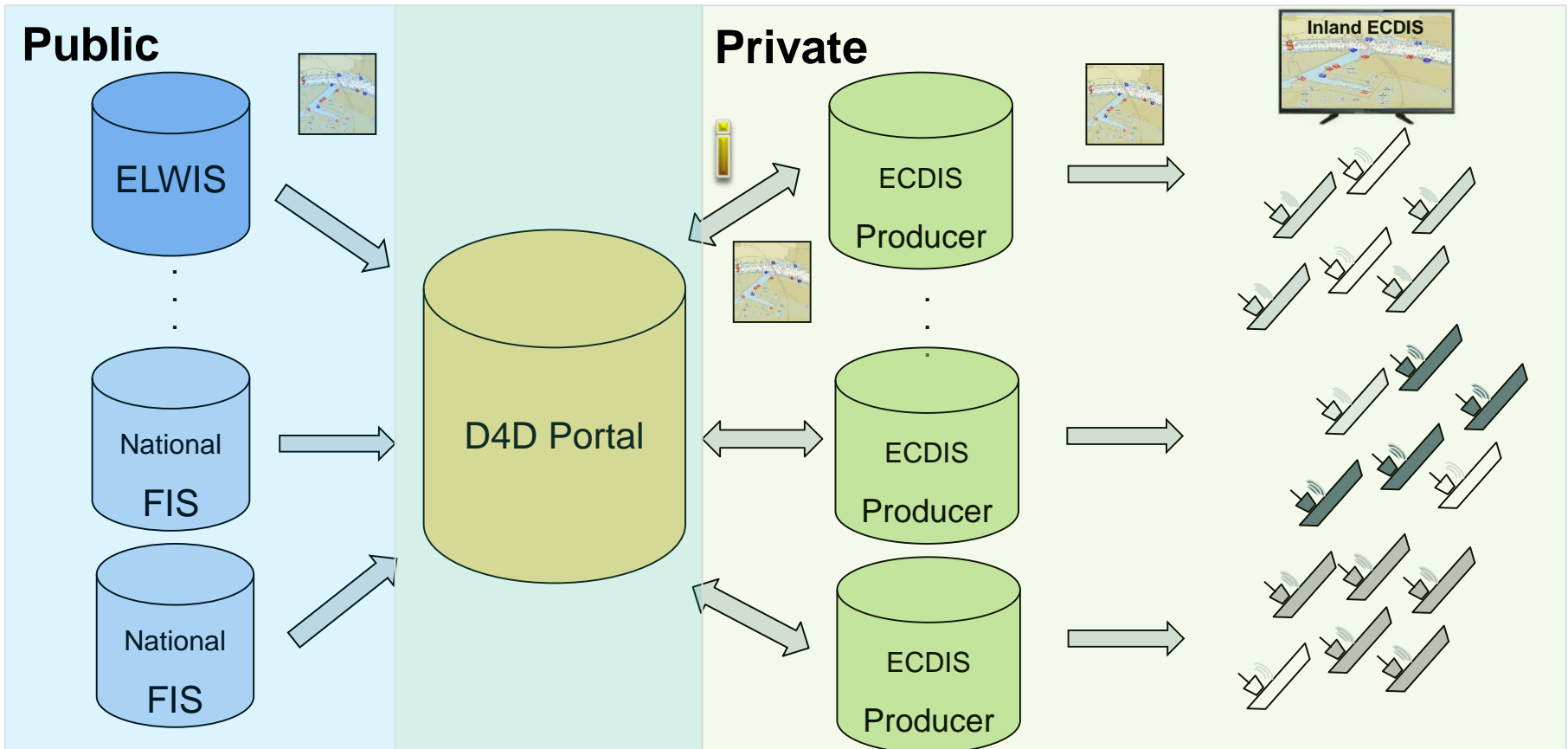
- The marking signs (notice marks and buoys) are the most frequently changing objects in the Inland ECDIS Navigational Chart (IENC)
- Therefore the Inland ECDIS Standard (IES) provides the possibility of Incremental IENC Updates, a smart and fast way to add changes to an IENC base cell
- In the case that we will use AIS AtoN in future, the need of fast IENC updates will increase



Start within a RIS COMEX reference application

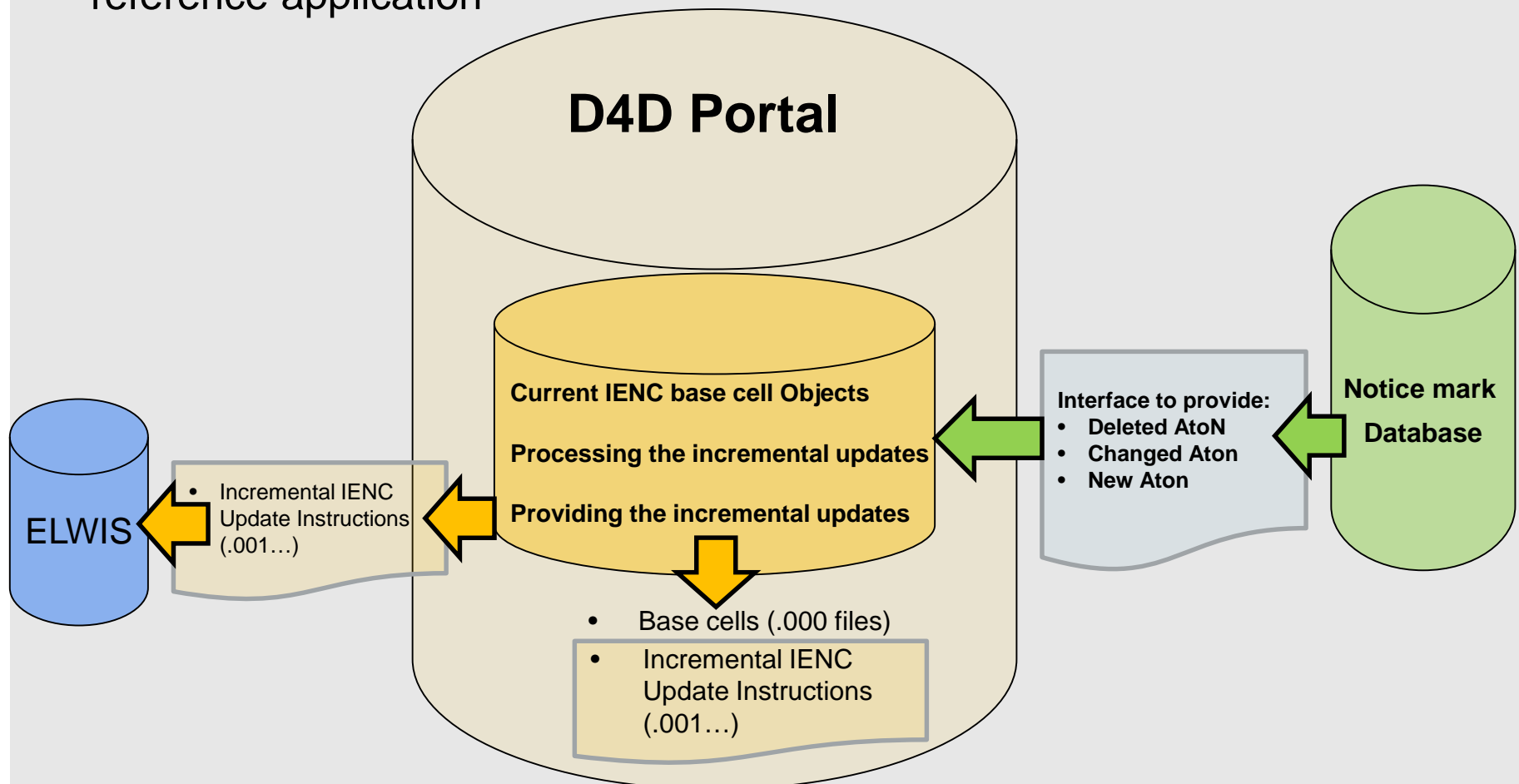
IENC production and distribution

- A result of IRIS Europe III was a centralized access point for the provision of IENCs to the Inland ECDIS manufacturers



Concept for Incremental IENC Updates

- Prepared in RIS COMEX at the Elbe-Weser Corridor within the planned reference application



Wir machen Schifffahrt möglich.



WSV.de

Wasser- und
Schifffahrtsverwaltung
des Bundes

**Thank you for
your kind
attention!**

Wieland.Haupt@wsv.bund.de